

Multiple ZNS Sever System on parallel networks

Cameras:

MP1A, MP2A, MP3DN,
MP5A, MP8D, MP8P,
ZN-D2024, ZN-PT304WL,
ZN-YH305, ZV-S306,
DDK-1000, DDK-1200,
DDK-1500 and/or DDK-1500D

Lens: Megapixel, Digital, & Analog

CAT5e Cable runs from the
cameras to the switch

PoE Switches with (8) or more
PoE 10/100 ports and at least
(1) Gigabit port:

CAT5e Cable runs from PoE Switch
to the ZNS NVR Video Server

Video Servers: (min. requirements)

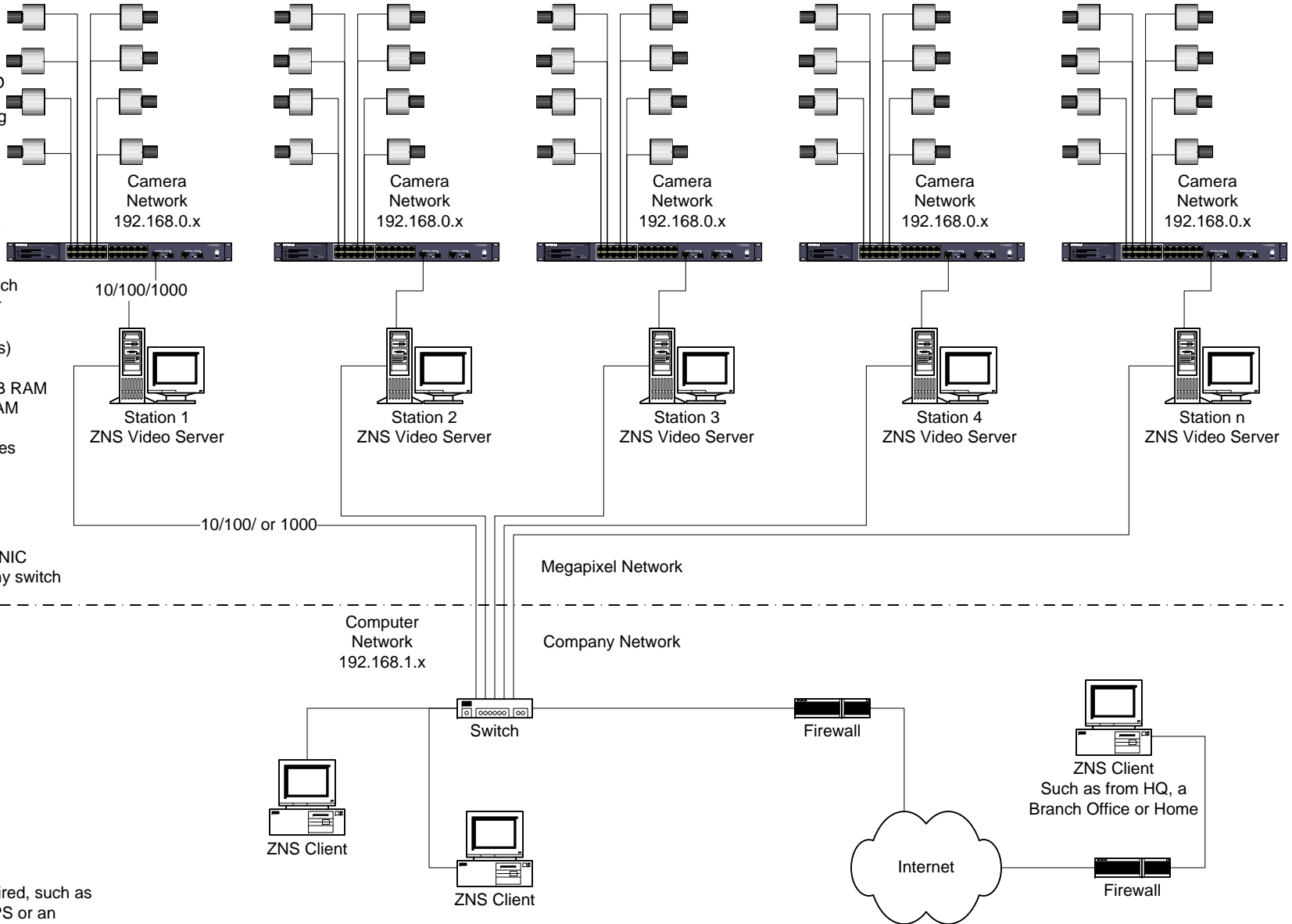
Windows XP Pro,
2.0 GHz Intel Core 2 Duo, 1GB RAM
Video Card: Nvidia 256 MB RAM
PCI 10/100/1000 NIC
500 GB or 1TB SATA HD Drives

Monitors and cables for
DVI, VGA, or SVideo

CAT5e Cable runs from onboard NIC
or 2nd NIC card to the company switch

Your existing equipment

* Additional items may be required, such as
a housing for the camera, UPS or an
enclosure for the PC Video Server.
+ A sample list of potential equipment can
be made available.



DATE: September 29, 2007

COMPANY NAME: CBC America Corp.

NOTES:

Designed By: Mark Stollenwerk

FileName: MultipleZNSServerSystem